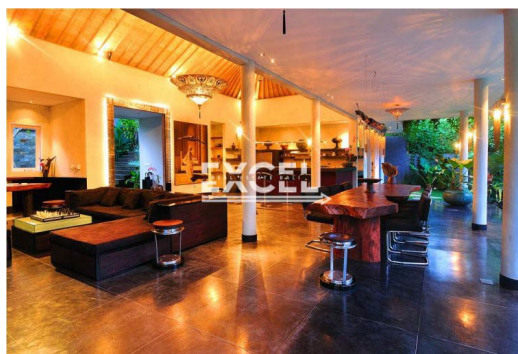
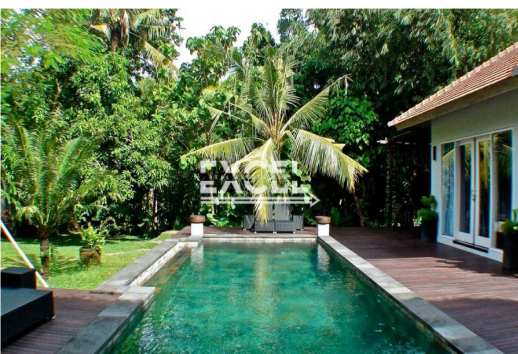


Contact

Karl : +62 815-5701-729
Siska : +62 815-5749-228
info@excelbali.com



3+1 BR Leasehold Riverside Villa with Pondok Wisata in Umalas, leasehold for 24 years extendable

Property Information

Ref.ID	: UMV-201
Location	:
Title	: Leasehold 25 years
Bedrooms	: 3
Bathrooms	: 4
Build Size	: 350 sqm
Land Size	: 1100 sqm
Year Build	:
Price	: USD 460,000

Contact

Karl : +62 815-5701-729
Siska : +62 815-5749-228
info@excelbali.com



Bathed in dappled sunlight, Just short drive from the fashionable center of Seminyak, through the green belt of Umalas, the villa occupies a beautifully landscaped riverside block that offers tranquillity and privacy. Spacious and filled with soft light, the design of the villa echoes the rice terraces as the block gently cascades towards the banks of the river. Framed by giant bamboo and mature palms this spacious three-bedroom designer villa is furnished with elegant style and individual features.

The entrance to the villa leads through the front door to a large open pavilion where the living room, open kitchen and bar occupy the end of pavilion overlook the gardens and the stone-lined swimming pool, creating a living mosaic of green hues.

To either side of the main pavilion, two identical king sized guest rooms also enjoy beautiful views of the garden and pools. Decorated in soft burgundy and pale grey, with generous en-suite bathrooms, each suite offers comfort and privacy in understated luxury. A separate master suite located beside the river. A large bedroom with its own entertainment system, a dressing room and a beautiful bathroom, which can be opened to the private terrace or enclosed with large sliding doors, is spacious and opulent.

The Villa:

- Built on 1,100 sq metres with natural outlook.

Contact

Karl : +62 815-5701-729
Siska : +62 815-5749-228
info@excelbali.com



- Three king-sized bedrooms with en-suite.
- Suite 1 and 2 in main pavilion 28 sq/m each.
- Master suite 38 sq/m.
- Separate guest bathroom.
- Fully equipped open kitchen with quality appliances and oven.
- Large swimming pool 154 metres lined with natural java stone.
- Total Building 350 qm.
- Pondok Wisata

There are separate guesthouse / office space and a large parking space covered for 2 cars and motorbikes.

Offered to you lease hold for 24 years with an extension option for 15 years.